

# Asaka Kaisei High School



*Global Spirit,*  
*Creative Spirit,*  
*Human Spirit*

# **Table of Contents**

<b>School Overview</b>	1-3
➤ International Studies Course	
➤ International Day	
➤ Study Abroad Programs	
➤ Clubs	
<b>Courses Offered</b>	4-6
➤ Credit-Based System	
➤ Basic schedule of year	
<b>Koriyama</b>	7-8
➤ The city	
➤ Location	
➤ Kaiseizan Park	
➤ Downtown Area & Shopping	
➤ The Big I	
<b>Fukushima Prefecture</b>	9-10
➤ Lake Inawashiro	
➤ Mount Bandai	
➤ Goshikinuma	
➤ Taimatsu Akashi	
➤ Tsurugajo Castle	
➤ Aquamarine Fukushima	
<b>School Location</b>	Back Cover
➤ Map	
➤ Address & Contact Information	
➤ School Emblem	

# School Overview

---

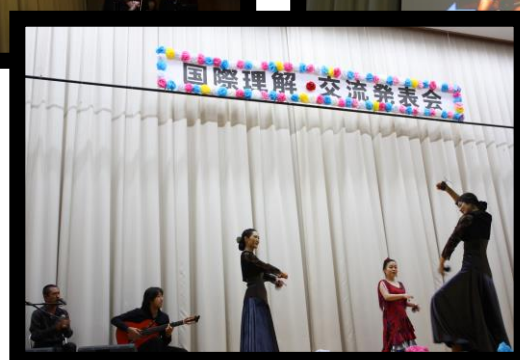
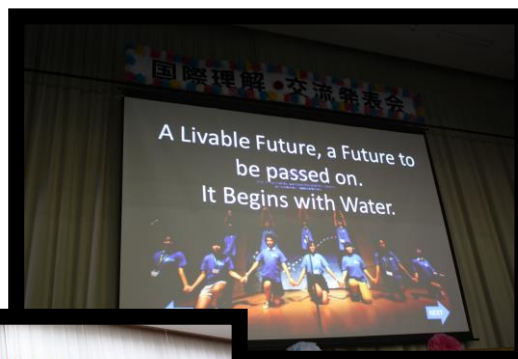
## International Studies Course

Founded in 1996, Asaka Kaisei High School (AKHS) aims to cultivate a “Global Spirit,” a “Creative Spirit,” and a “Human Spirit” in every student. It is the first and only high school in Fukushima Prefecture to offer an International Studies Course. This course is designed to develop a global perspective through the study of science and language. AKHS offers students a choice of 5 languages including Japanese, Chinese, Korean, Spanish, and English. We also encourage them to take part in seminars for international cooperation and cross-cultural understanding.

## International Day

In addition to the International Studies Course, AKHS provides students with opportunities to deepen their interests in International Cooperation and Cross-cultural Understanding. In 2012, many lecturers such as NGO organizers, professors, and participants of Japan International Cooperation Agency provide lectures on a variety of topics for students.

Through the lectures, students learn severe circumstances of children in developing countries, how to interact with foreigners living in Japan, etc. and the representatives present their researches on International Day.





# Study Abroad Programs

AKHS not only encourages its students to study abroad, but it offers 2 affordable ways to do so. The first is the Australia Program in which the students travel to Australia on a two week exchange. They live with host families, go to Australian schools, and partake in cultural activities. In the second program, students visit one of Asia's developing countries for a week. It is offered every other year and students must apply to be accepted. Both programs aim at further cultural exchange and international understanding on a grassroots level.





# Clubs

Most Japanese high school students are supposed to join club activities. They have it almost every day after school and sometimes even on weekends. Club activities not only help student to improve their skills but also provide them with opportunities to develop important life skills.



Art Club  
Badminton  
Baseball  
Basketball  
Drama Club  
Foreign Language Club  
Japanese Culture  
Jr. Red Cross  
Yosakoi Dance Club  
Music Club  
Oiga (Story telling Club)  
Soccer  
Soft Tennis  
Table Tennis  
Volleyball  
Kendo



# Courses Offered

AKHS operates on a credit-based system which means that students receive a certain amount of credits for each course they take. This system grants flexibility to the students by allowing them to choose their preferred courses of study. More specifically, after students complete the required subjects below, they can choose elective courses from the list on page 5. The school year starts in April and is divided into two semesters. The first semester ends in September while the second semester starts in October and finishes in March.

Subject Area	Subjects	1st year	2nd year	3rd year
Japanese Language	General Japanese Language	4		
	Classic Japanese Literature A			2
Geography and History	World History A	2		
	Japanese History A		2	
	Japanese History B		4	
	Geography A		2	
	Geography B		4	
Civics	Contemporary Society		2	
	Ethics		2	
	Politics and Economy			2
Mathematics	Mathematics I	4		
	Mathematics II		4	
	Mathematics A	2		
	Mathematics B		2	
Science	Basic Physics		2	
	Basic Chemistry	2		
	Basic Biology	2		
	Basic Earth Science		2	
Health and Physical Education	Physical Education	3	3	2
	Health	1	1	
Art	Music I	2		
	Music II			2
	Fine Arts I	2		
	Fine Arts II			2
	Calligraphy I	2		
	Calligraphy II			2
Foreign Language	Communication English I	4		
	Communication English II		4	
	Communication English III			4
Home Economics	Basic Home Economics		2	
Information	Information B	2		

Subject Area	Subjects	1st year	2nd year	3rd year
Home Economics	Fashion & Molding Basic			2
	Food & Culture			2
	Nursing & Child Raising			2
	Life & Welfare			2
Business	Bookkeeping		2	4
	Business Basic			2
	Information Processing			4
	Business Information			2
Science and Math	General Mathematics I			6
	General Mathematics II			4
	General Mathematics III			4
	General Mathematics Exercises			2
	Basic Mathematics			2
	General Physics			4
	General Chemistry		4	
	General Biology		4	
	General Earth Science			4
	General Physics Exercises			2
	General Chemistry Exercises			2
	General Biology Exercises			2
	General Earth Science Exercises			2
	Biology Exercises			4
Physical Education	Sports I		2	2
English	Basic English Structure	2		
	English Understanding			4
	General English Practice			2
	English Expression		2	
	Language Laboratory I		2	
	Language Laboratory II			2
	Business English			2
	Media English			2
Humanities	General Japanese		4	4
	General Japanese Exercises			2
	General Japanese Classic Literature		2	
	Japanese Basic	2		2
	General World History Exercises			4
	General Japanese History Exercises			4
	General Geology Exercises			4
	World History Exercises		2	
	Current Affairs Exercises			2
	Contemporary Society Exercises			2
	Politics & Economics Exercises			2
	Ethics Exercises			2
International Studies	International Society			2
Chinese	General Chinese		2	2
Spanish	General Spanish		2	2
Korean	General Korean		2	2
Liberal Arts	International Exchange	2		
	Music Appreciation			2
	Appreciation of Fine Arts			2
	Japanese Traditional Culture			2

# **Basic Schedule of the year**

## **April**

- ♦ Opening Ceremony
- ♦ Entrance Ceremony
- ♦ Welcoming Ceremony
- ♦ Student Council Assembly
- ♦ Medical Exams

## **May**

- ♦ Area High School Sport's Tournaments
- ♦ Curriculum Guidance
- ♦ Golden Week (National Holidays)

## **June**

- ♦ Mid-term Examination
- ♦ Prefectural High School Sport's Tournaments
- ♦ Cross-Cultural Understanding Seminar

## **July**

- ♦ Australia Home Stay Program
- ♦ Summer Vacation
- ♦ Intensive Study Course

## **August**

- ♦ Summer Vacation
- ♦ Intensive Study Courses



## **September**

- ♦ Term-End Examination
- ♦ Athletic Meetings
- ♦ School Festival
- ♦ Closing Ceremony

## **October**

- ♦ Opening Ceremony
- ♦ School Foundation Day (Holiday)
- ♦ School Excursion Abroad
- ♦ School Fieldtrip
- ♦ Area High School Sports Events

## **November**

- ♦ International Day



## **December**

- ♦ Mid-term Examination
- ♦ Winter Vacation

## **January**

- ♦ New Year Holidays
- ♦ National Center Test for University Admissions

## **February**

- ♦ Term-End Examination
- ♦ High School Entrance Examination

## **March**

- ♦ Graduation Ceremony
- ♦ Closing Ceremony
- ♦ High School Entrance Examination
- ♦ Spring Break



# Koriyama

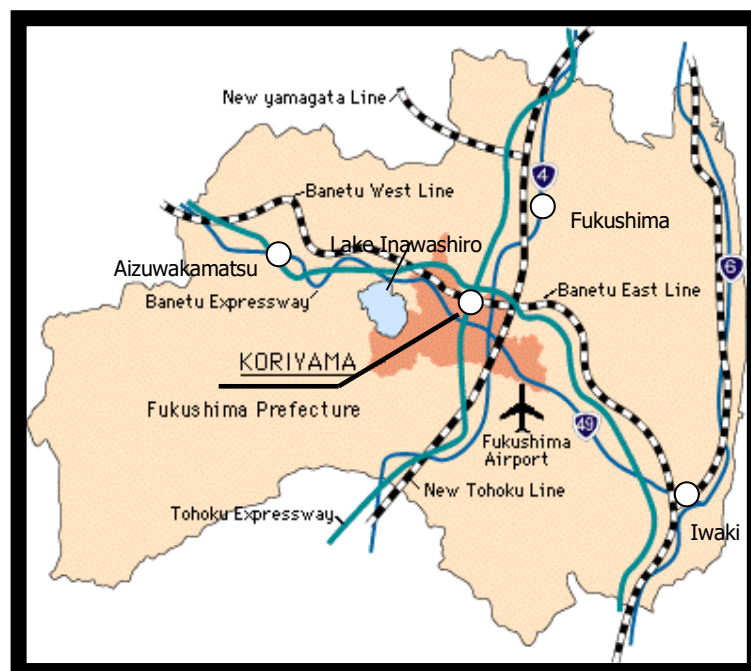
---

## The City

Founded in 1924, Koriyama is a relatively new city. It has approximately 330,000 people and has become the leading distributor of commercial and industrial goods in the Southern Tohoku district. It boasts some of the best shopping, entertainment, and restaurants that Fukushima Prefecture has to offer.

## The Location

Conveniently located, Koriyama sits at the heart of Fukushima Prefecture. Its central location provides easy access to all major cities and attractions. It is roughly a 40 minute drive to one of the clearest lakes in the world, Inawashiro, and an hour drive to the magnificent Mount Bandai. Just past Mount Bandai to the west is the historical city of Aizuwakamatsu, where people gather to see one of the few remaining castles in Japan. To find out more information about the area, please refer to page 8-9.



In addition to its prime location, Koriyama also lies at the crossroads of major transportation systems, including the Tohoku Expressway, the Banetsu Expressway, the Tohoku Highway, and the Shinkansen bullet train. To get to Tokyo via the Shinkansen, it costs less than 8,000 yen one way and takes about 90 minutes (prices and times vary according to the type of train). Fukushima Airport lies in the neighboring town of Sukagawa, about a 30 minute drive from Koriyama Station.

## Kaiseizan Park

This is the largest park in Koriyama, covering an area of 305,000 square meters. It features a myriad of attractions including a baseball stadium, an amphitheatre, a few large swimming pools, a 2.2km jogging/walking path, an athletic track, an archery range, a playground, a rose garden, a duck pond, and numerous fountains. Kaiseizan Park is especially popular during the springtime for its extraordinary cherry blossoms.

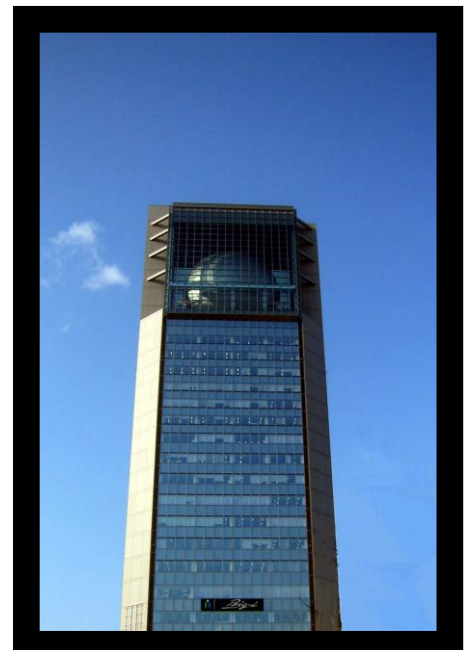


## Downtown Area & Shopping

The Koriyama station area contains a number of major department stores, including Usui and Muji. On the south side of the station, there is a small, but well stocked Yodobashi Camera electronics store. Koriyama station has numerous small boutiques, used clothing and vintage stores, as well as chain stores like Body Shop and Starbucks. On the East side of the station lies Aeon Town, which features a Sports Authority and an ABC Mart shoe superstore. As far as being a consumer goes, there is little that one cannot find in Koriyama.

## The Big I

Upon first glance, one might assume that The Big I is simply an office building. However, it encompasses a multitude of different attractions. On the top floor, there is a planetarium in which people enjoy star gazing. Located just a floor below the planetarium is an observation deck which offers breathtaking views of the city, free of charge. The ensuing floors contain a diverse collection of stores, cafes, and restaurants.



# Fukushima

---

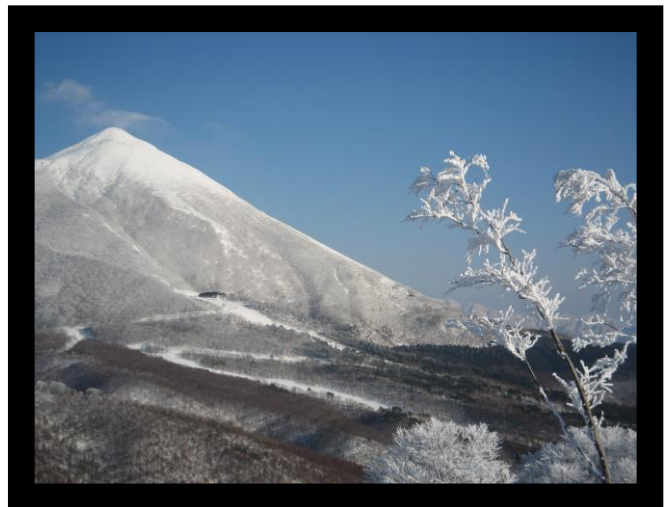
## Lake Inawashiro

This is the third largest lake in Japan, measuring 55.32 km in circumference. It is nicknamed, “Heavenly Mirror” because it reflects the majestic Mt. Bandai on its surface. In the summertime, people enjoy the sandy beaches and pristine water, ideal for swimming and water sports. During the winter, many people come to see the migrant swans.



## Mount Bandai

Mount Bandai, renowned for its numerous ski resorts and fantastic hiking, is the symbol of Fukushima. This volcano is unique in that one side resembles Mt. Fuji's beautiful hillside, while the other is covered in a rugged crater. The area around Mount Bandai, northeast of Aizuwakamatsu, has been declared a national park.



## Goshikinuma

Goshikinuma means “5 Colored Lakes,” which refers to the lakes' changing color, ranging from emerald to cobalt blue. The waters of Goshikinuma present an impressive contrast with the foliage around them, especially in autumn when the leaves begin to turn crimson red. The lakes lie along a 3.7 km nature walk that is always bustling with tourists from May to November.





---

## **Taimatsu Akashi**

### **(Sukagawa Fire Festival)**

With a history of 400 years, Taimatsu Akashi is one of Japan's three greatest fire festivals. A group of men and women carry thirty giant torches to the top of a hill and set them alight when dusk falls. Taiko drums play as the torches burn in the night sky. It is truly an amazing spectacle.



---

## **Tsuraga-jo**

Located in Aizuwakamatsu, this castle houses a local history museum and has been named a national historical site. It is best known for the countless cherry trees sprinkling the castle grounds. People flock from all over the prefecture to see the famed cherry trees in bloom. Additionally, Tsuruga-jo is the symbol of Aizuwakamatsu and is the only remaining castle in Fukushima.



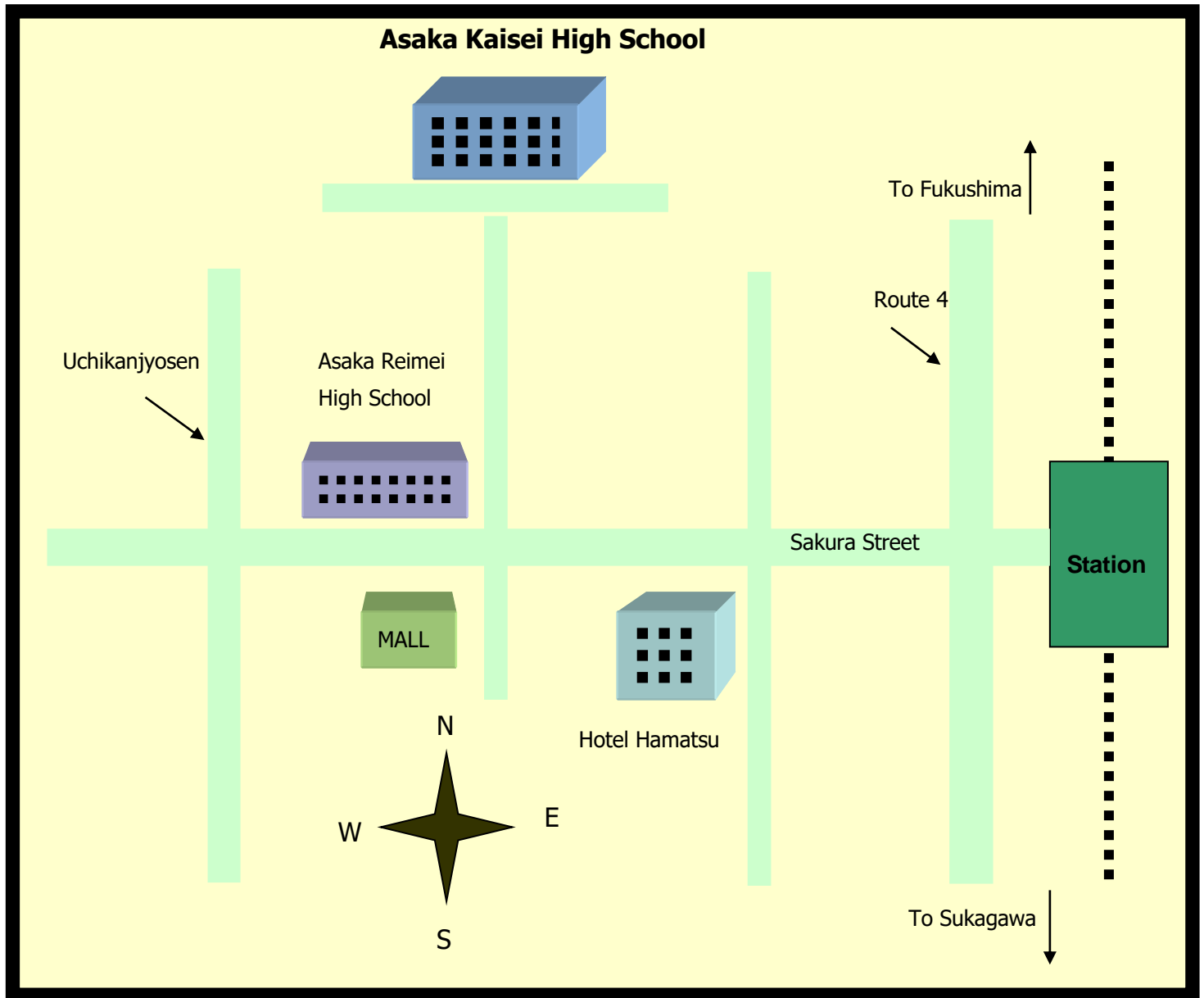
---

## **Aquamarine Fukushima**

Located in a picturesque seaside town near Iwaki, this new state of the art aquarium is applauded for its innovative architecture, interactive displays, and educational appeal. It consists of 4 floors; each designed to give the guests a close up view of the ocean's mysterious creatures while simultaneously emphasizing the vastness of the ocean and the importance of human influence on nature.



# School Location



## Asaka Kaisei High School

15-1 Momomidai

Koriyama-shi, Fukushima-ken

963-8018 JAPAN

Phone: 024-932-1714 Fax: 024-932-4147

E-Mail: [school@asakakaisei-h.fks.ed.jp](mailto:school@asakakaisei-h.fks.ed.jp)